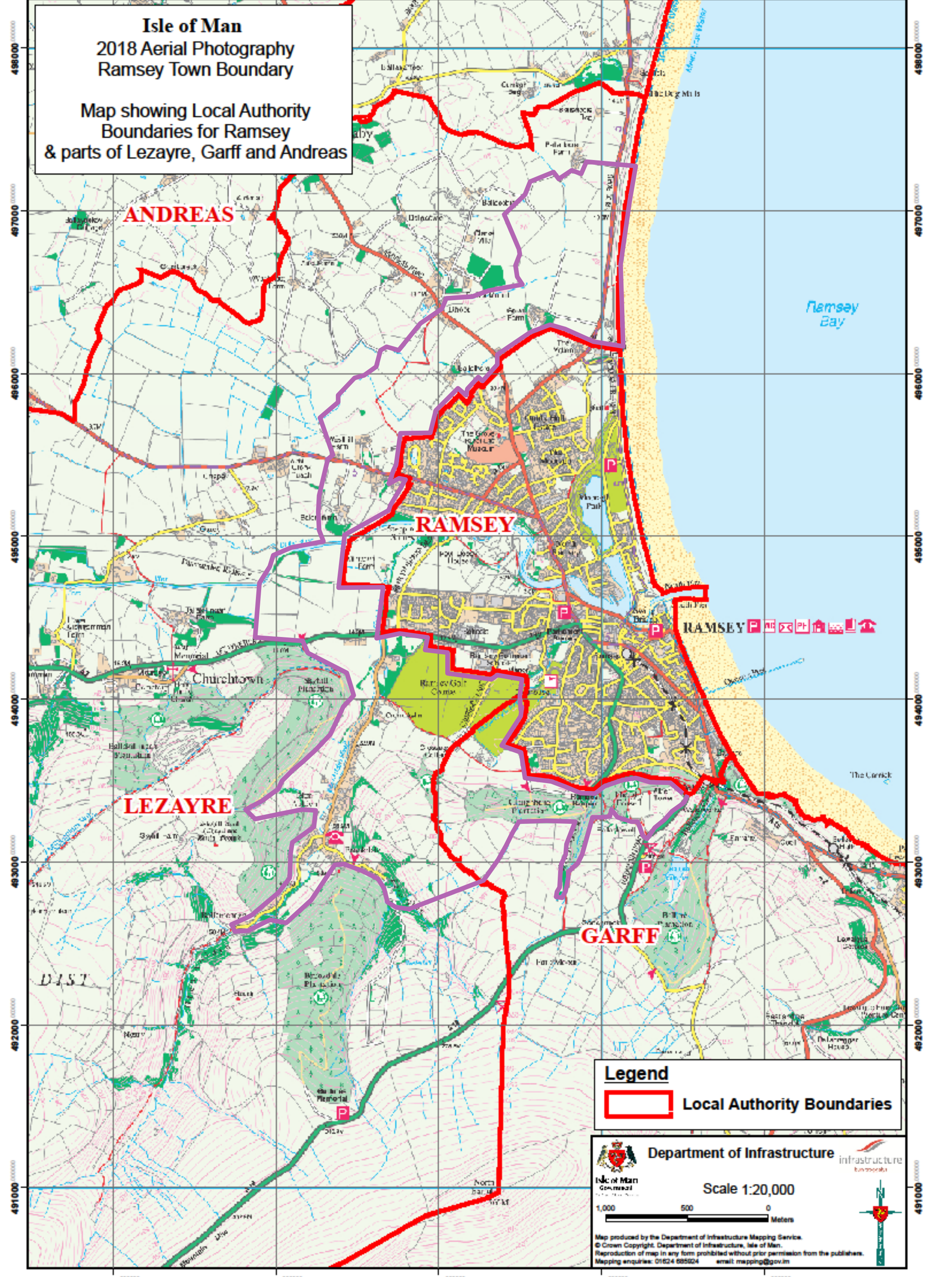


242000 243000 244000 245000 246000

Isle of Man
2018 Aerial Photography
Ramsey Town Boundary

Map showing Local Authority Boundaries for Ramsey & parts of Lezayre, Garff and Andreas



ANDREAS

RAMSEY


LEZAYRE



GARFF

RAMSEY

Ramsey Bay

Legend

 **Local Authority Boundaries**

 **Department of Infrastructure** 

Scale 1:20,000

1,000 500 0 Meters

Map produced by the Department of Infrastructure Mapping Service.
© Crown Copyright. Department of Infrastructure, Isle of Man.
Reproduction of map in any form prohibited without prior permission from the publishers.
Mapping enquire: 01624 655524 email: mapping@gov.im

242000 243000 244000 245000 246000

498000
497000
496000
495000
494000
493000
492000
491000

498000
497000
496000
495000
494000
493000
492000
491000