



June 2021

Valued Customer

We write with great excitement to announce that after much planning, the Northern Swimming Pool's main entrance will undergo a major refurbishment.

Start date: Tuesday 02 August 2021

Work duration: 10 weeks with completion by 08 October 2021

The Northern Swimming Pool Board has throughout this process from design and planning been focused on ensuring that any alteration to the main entrance must enhance the service provision for all customers wishing to access the facilities here at the Northern Swimming Pool.

The Northern Swimming Pool Board also requested from the design team that the facility remain operational with minimal disruption to customers and working closely with the team in the Northern Pool Café this will be achieved. During these refurbishment works the entrance to the whole facility (pool and Café) will be through the separate Café door and a walkway will be clearly marked out through the café for customers to gain access to the Swimming Pool reception.

The area immediately around the current main entrance will be cordoned off including the current drop off/pickup bay and disabled parking bay (see Constraints Plan – **Blue area**). However, a temporary disabled carpark area will be available in the area in front of the café and this will be adequately signed (see Constraints Plan – **Orange area**). Please respect this more limited temporary disability parking provision. Parking will continue as normal in the car park to the rear of the facility.

On the reverse side of this letter are drawings for your reference:

Drawing 1: New Front Entrance Plan

Drawing 2: Constraints Plan – How to access the facility and Construction Area

(Larger drawings are on display in the reception area for public viewing)

Should you have any questions regarding the Main Entrance refurbishment, please contact a member of the management team.

Board Administrator: Maria Crane
Email: administrator@nsp.im

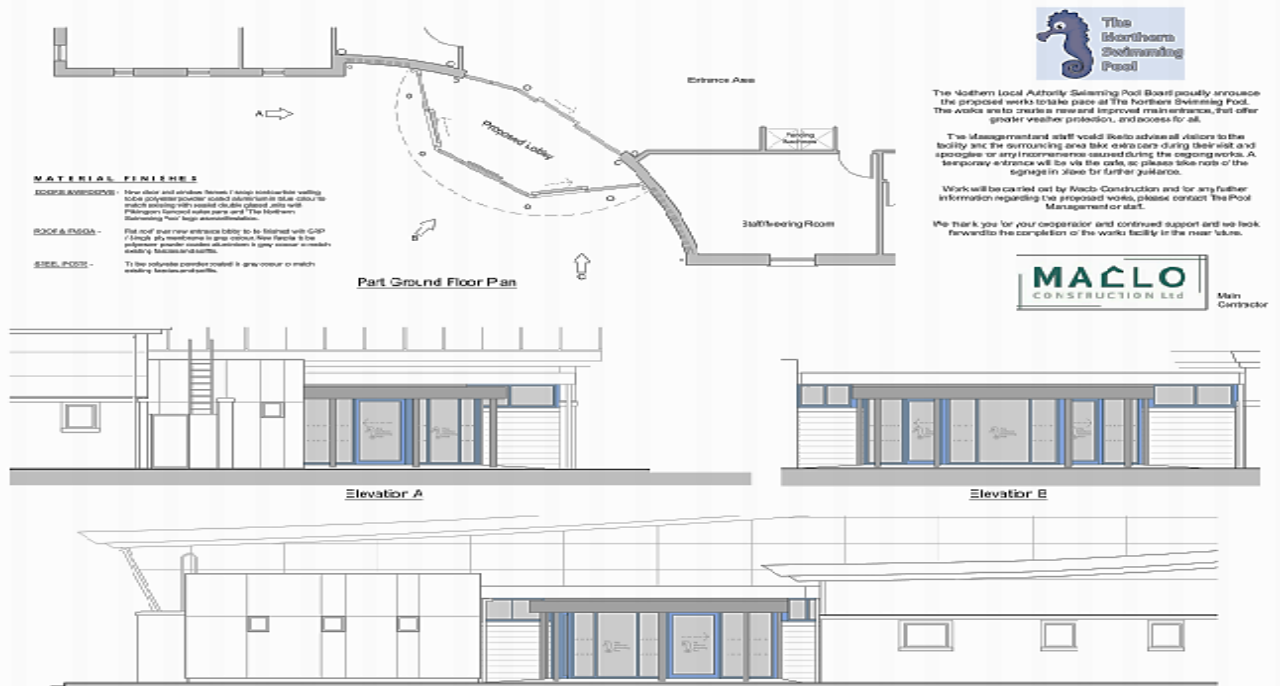
Pool Manager: Gary Hunter
Email: manager@nsp.im

We apologise for any inconvenience during this refurbishment and thank you for your co-operation and continued support.

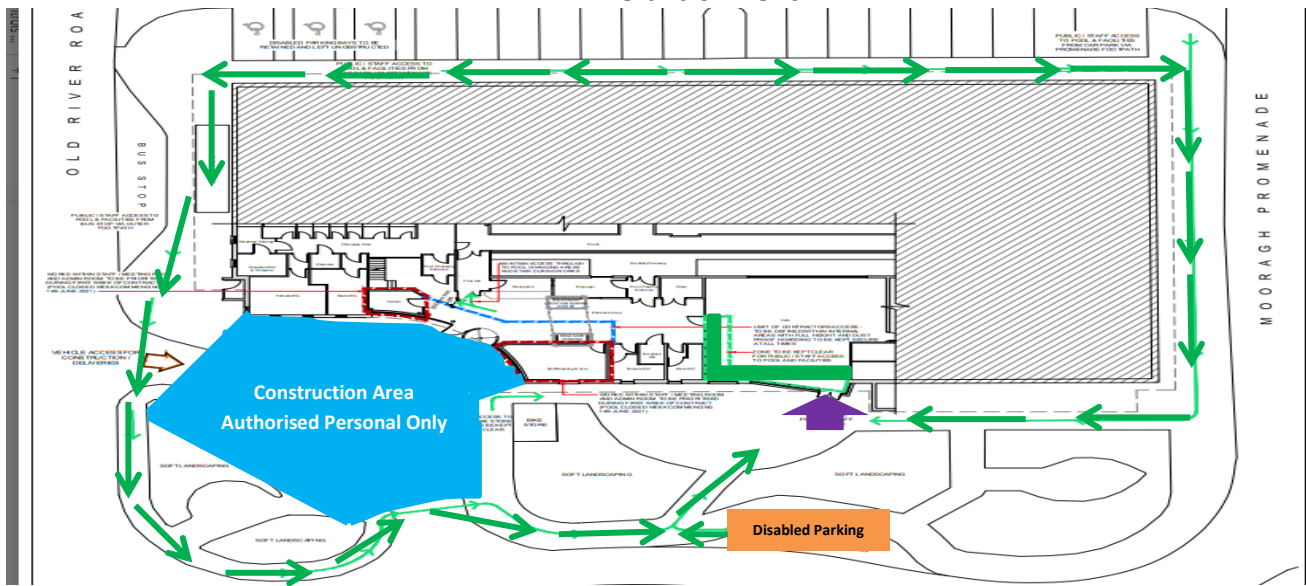
Kind regards

Northern Local Authorities Swimming Pool Board and Team

Drawing 1: New Front Entrance Plan



Drawing 2: Constraints Plan – How to access the facility during the main entrance refurbishment



- Disabled Key:**
- █ Construction Area external (Authorized Personal Only)
 - - - Construction Area Internal (Authorized Personal Only)
 - ↑ Facility Entrance will be via the Café during refurbishment
 - Customer walkway to the Café entrance