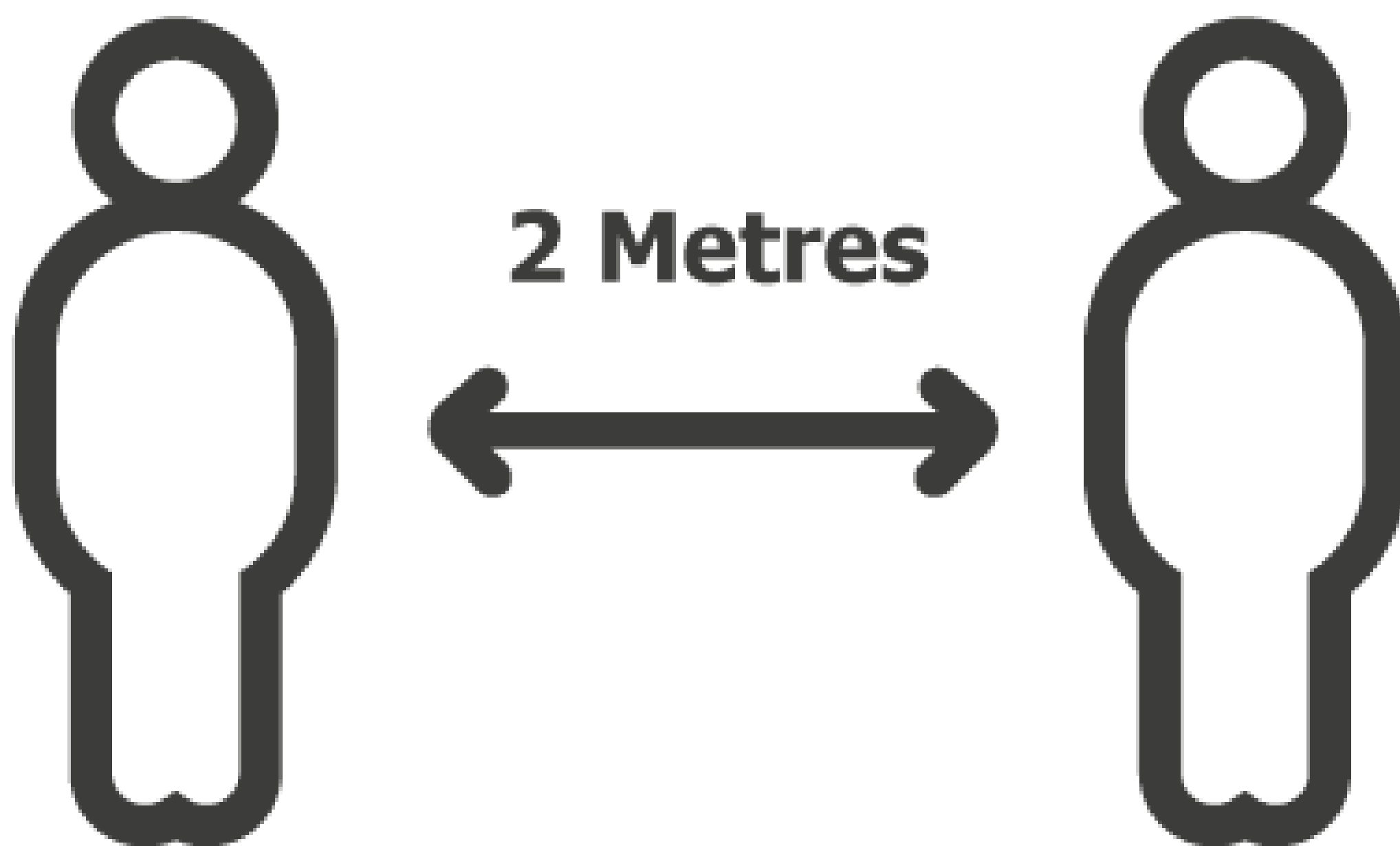


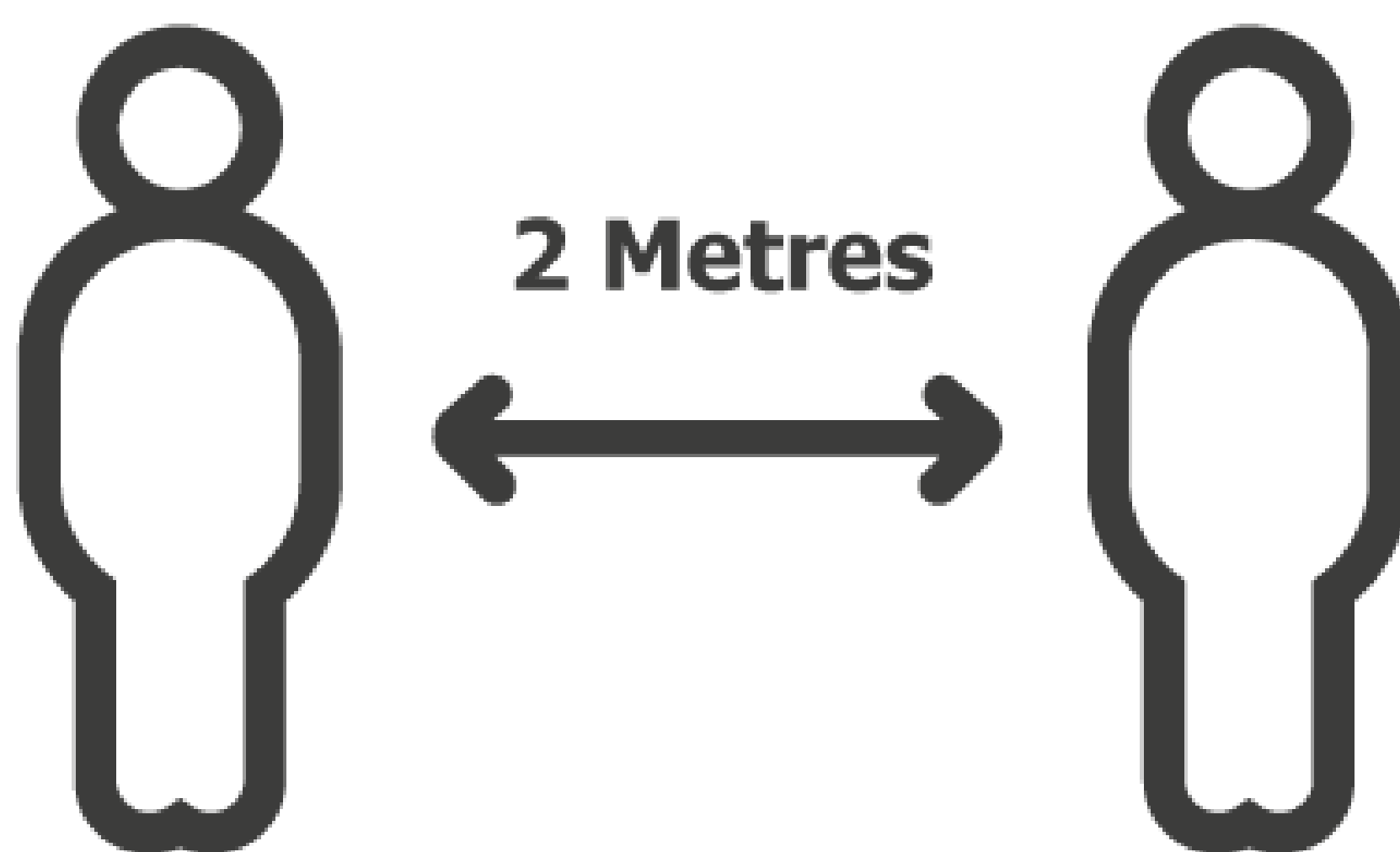
Isle of Man
Government
Reiltys Ellan Vannin

SOCIAL DISTANCING

PLEASE KEEP A SAFE DISTANCE OF
2 METRES FROM OTHERS



THANK YOU FOR PRACTICING SOCIAL DISTANCING



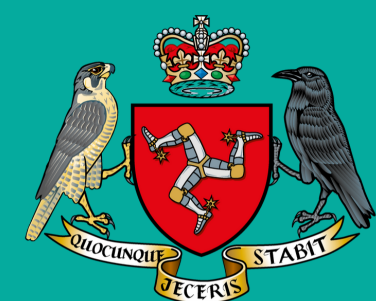
SOCIAL DISTANCING

To protect our customers and staff, we are actively managing the number of customers who can come into our premises at any one time.

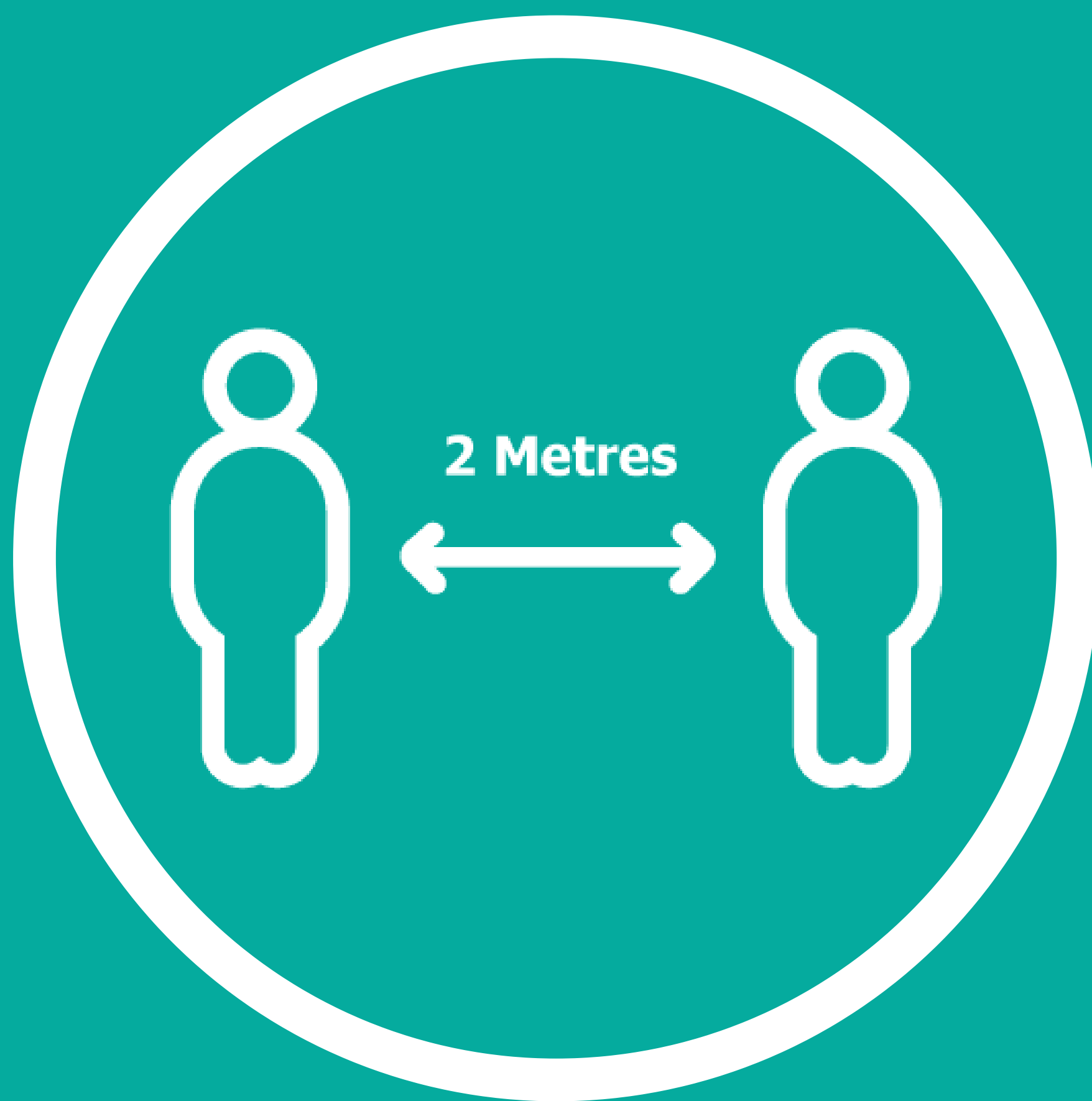
Please make sure you keep a safe distance at all times and adhere to floor markings where present.

When at the front of the queue, please wait behind the line until called forward.

Thank you for your co-operation

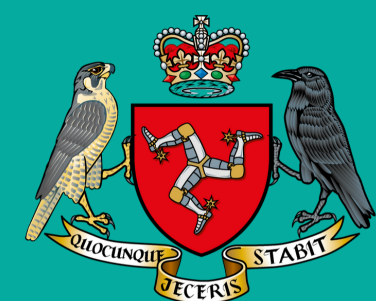


Isle of Man
Government
Reiltys Ellan Vannin



**When queuing for the till,
please keep 2 metres between
yourself and the person in
front of you.**

**Please use contactless payment wherever possible
(payment is now available for purchases up to £45)**



**Isle of Man
Government**

Reiltys Ellan Vannin



CUSTOMER NOTICE

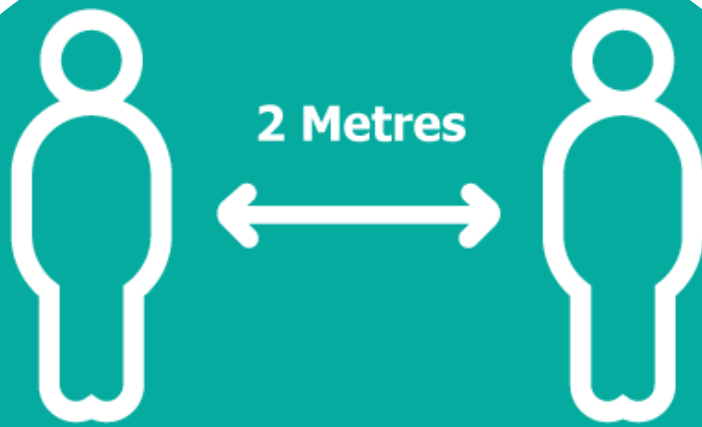
**DO NOT ENTER THE EXCLUSION
ZONE AROUND THE TILL**

SHOP SAFELY



**Isle of Man
Government**

Reiltys Ellan Vannin



Maintain a 2m distance
at all times, including when
queuing outside and once
inside the store



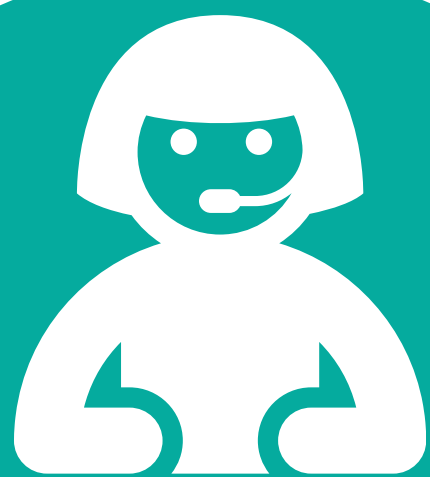
Go contactless
where possible with your
payment method



Shop alone where possible
to help reduce congestion



Follow directional markings
and respect one-way rules
which may be in place

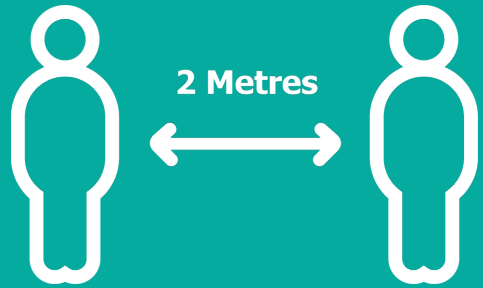


Listen to and respect staff
at all times- they are helping
to keep you safe

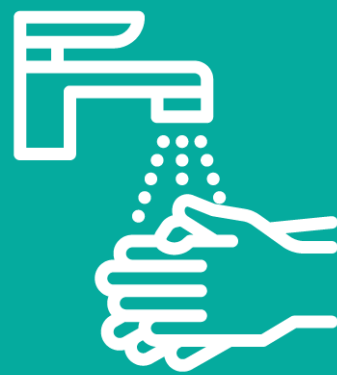


Wash your hands
before and after shopping-
use sanitizer where
available in stores

STAY SAFE AT WORK



Maintain a distance
of 2 metres from colleagues
on site & in communal
areas



Regular hand washing
throughout the day for at
least 20 seconds each
time



Travel seperately
and avoid sharing rides to
work with anyone outside
your household



Regular wiping down
using disinfectant wipes to
clean all high touch areas
regularly



Limit internal meetings
or reduce the number of
participants and ensure social
distancing is followed



Contactless delivery
is advised and recipients
should wash their hands
following contact with any
goods received



Clean communal areas
after use, including disposing
of own waste- consider use
of own/disposable
cutlery



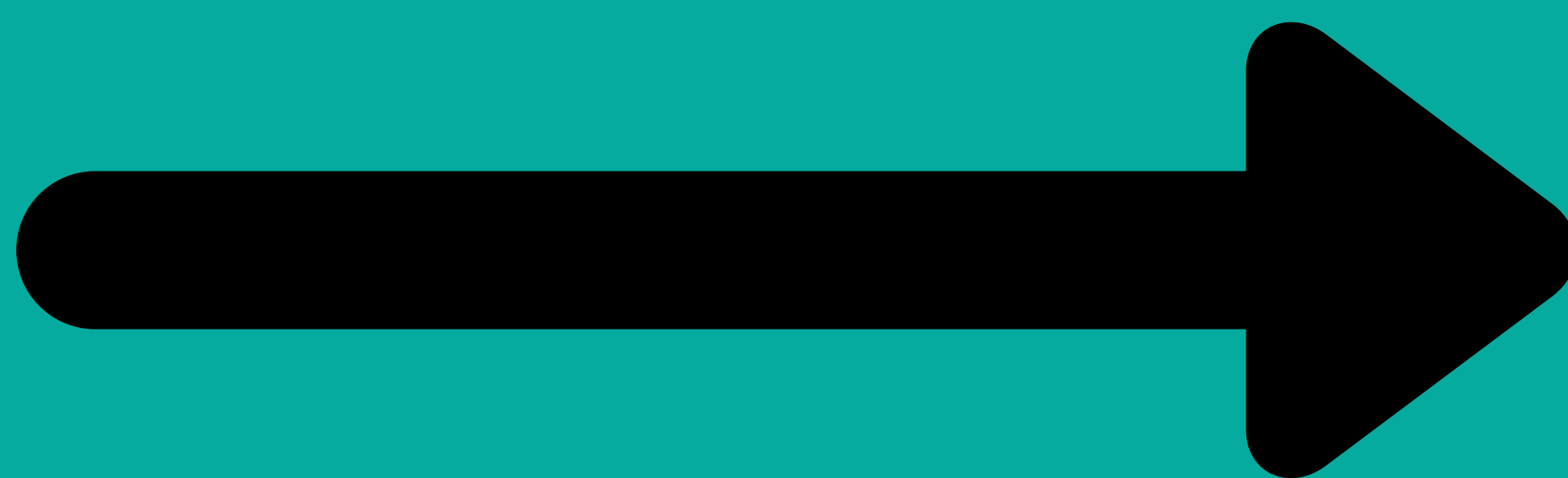
Limit shared office supplies
by using own supplies where
possible- or use hand
sanitizer after use of a
shared item

Displaying symptoms of COVID-19?

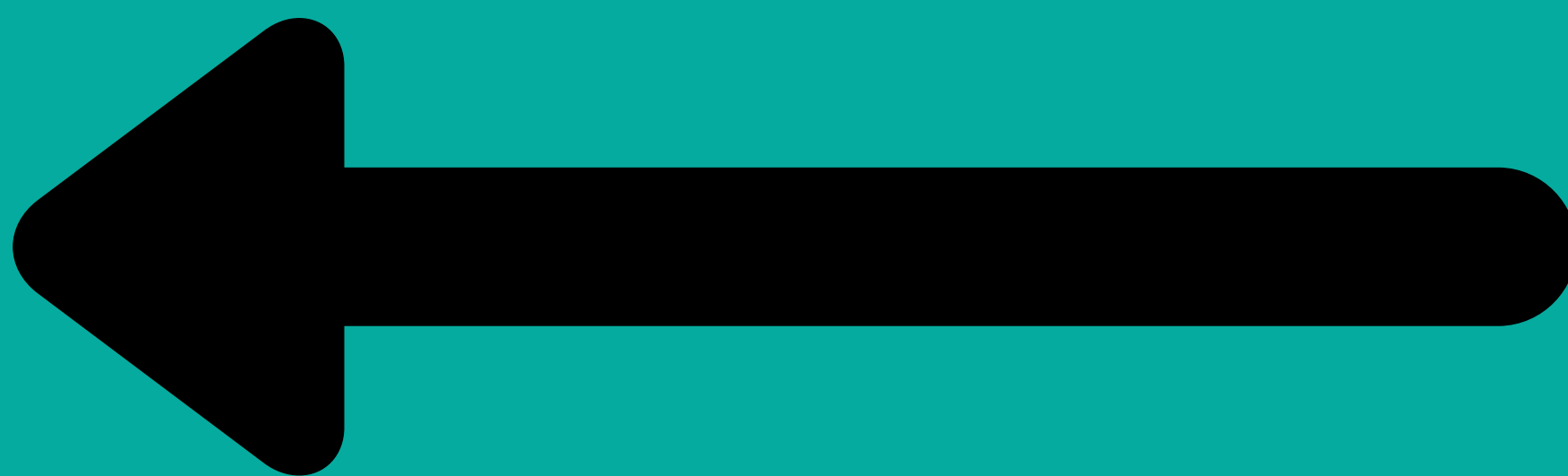
If you become unwell at work and believe you may have COVID-19, you must:

- Follow the guidance on self-isolation and not return to work until the period of self-isolation has been completed
- If you're waiting to be picked up to go home, you should stay in a designated room at least 2 meters away from others and if possible open a window for ventilation. If the weather permits, remain outside but at least 2m away from others.

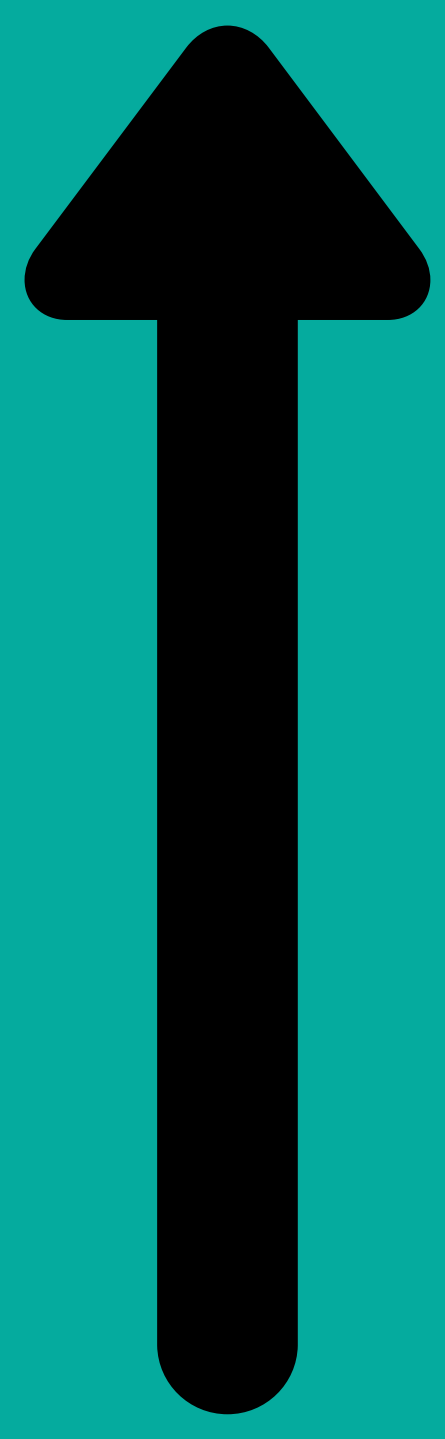
**PLEASE
FOLLOW THE
ARROW THIS
WAY**



**PLEASE
FOLLOW THE
ARROW THIS
WAY**



**PLEASE
FOLLOW THE
ARROW THIS
WAY**



**PLEASE
FOLLOW THE
ARROW THIS
WAY**

